

# Exporting iMovies to Quicktime



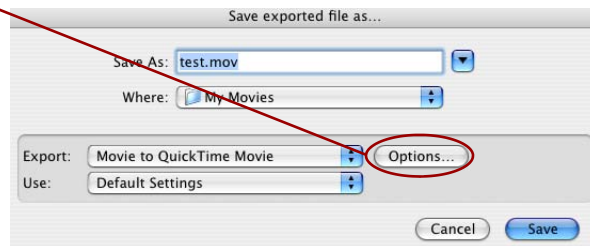
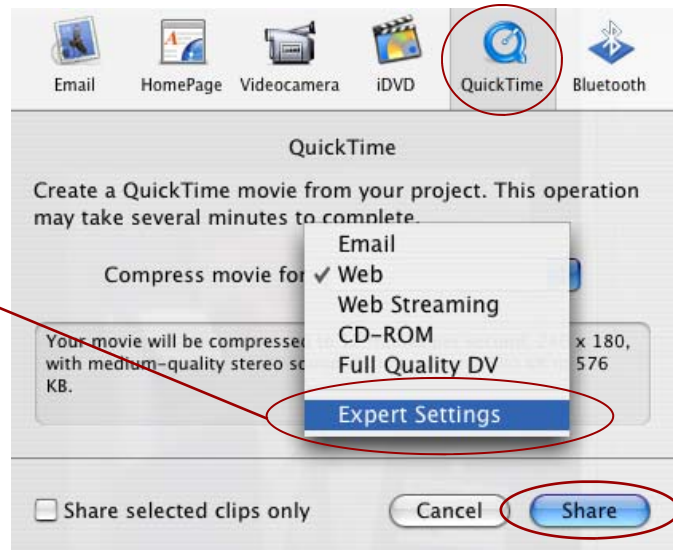
**1** Make sure you save your video (file > save project).

**2** Click File > Share

**3** Click the Quicktime tab and select “Expert Settings” from the pull-down options.

Click Share

**4** Another window will open. You need to click the “Options” button to customize your settings.

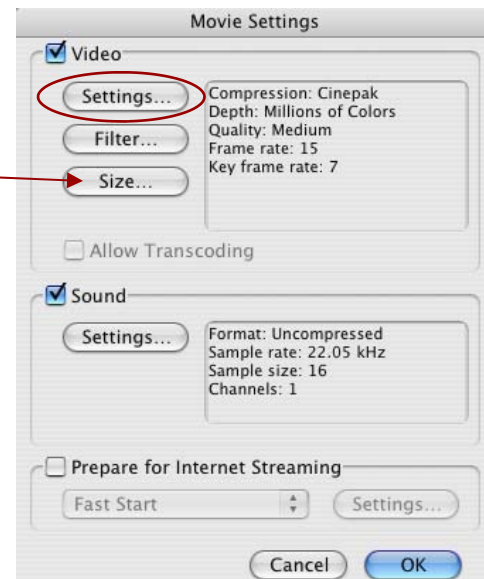


**5** Choose your export settings. The settings shown here are ideal for CD playback. →

a) For full-screen movies, choose a width and height of 640x480 in the size window. If your movie is longer than 10 or 15 minutes, you'll probably need to set the width and height at half that—320x240—to ensure it will fit on a CD.

b) Make sure your compression is set to Cinepak or Sorenson (**if it's not, it might not play on other computers or work with Powerpoint**). Sorenson will give you a better quality file, but takes substantially longer to export. To change these settings, click on the “Settings” button.

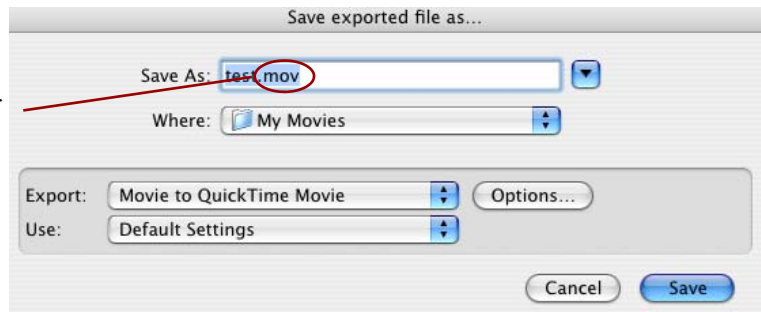
d) Click OK



**IMPORTANT NOTE BEFORE CONTINUING:** The quality of your final video file can vary based on these settings and the amount of effects and motion in your movie. Compressed titles almost always look poor unless you use the largest fonts. These settings are just a recommendation.

Video compression is a mad, mad science. Want to know more? We're here to help...Just Ask!

**6** Choose where you want the file to be saved and name it (make sure you remember where you save it!). You must put “.mov” at the end of your file name. This will help ensure it works on a PC.



*Remember: PCs will only play the file if it ends in “.mov”*

**7** That's it! Wait patiently while your file exports. It can take as long as 10 minutes for each minute of footage you have (a 10 minute movie could take as long as an hour and 40 minutes to export). **Don't do anything on the computer while the file exports.**

### **REMINDER!**

**A CD-Rom holds only 650MB of data. You'll only be able to fit a 10-15 minute movie on a CD at full-screen (640x480). Anything longer will have to be set to a smaller screen size on export (like 320x240).**