

# Exporting Movies to Tape with iMovie HD



## Exporting to DV tape

**1** To Export out to **DV Tape** Using our JVC DV/VHS combo decks:

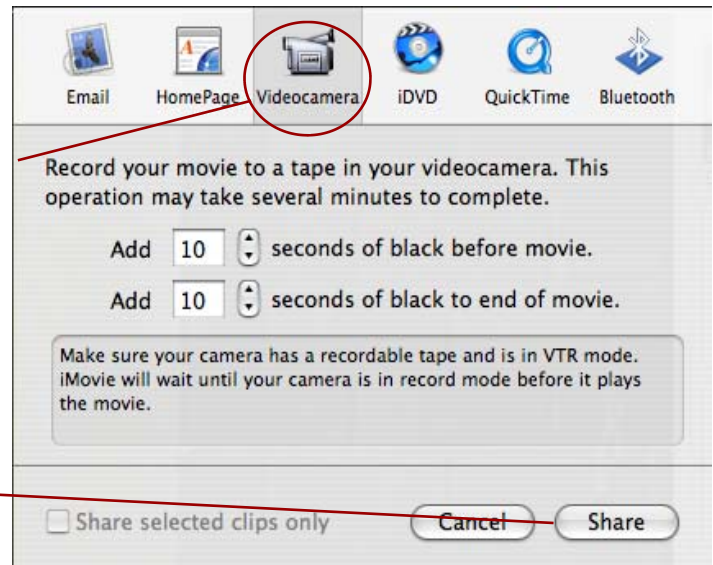
1. Place your blank DV tape in the deck.
2. Set the channel on the deck to F-1 (use the remote—it makes it easier.).

**2** Click on File > Share

You will get a window with options for exporting your movie. Select "VideoCamera"...(iMovie considers any export to tape as an export to a camera.)

The standard settings for the options in this window are as seen at right. You can adjust these if needed.

Click Share.



- iMovie will automatically start recording to your DV tape.
- Exporting movies is a real-time event, meaning a 20 minute movie will take 20 minutes to export.
- **Do not do anything else on the computer while your movie exports!**

## Exporting to VHS tape

**1** To Export out to **VHS Tape** using our JVC DV/VHS combo decks:

1. Place your blank VHS tape in the deck.
2. Set the channel on the VCR to F-1.
3. Press the DV Dub button (it's under the "stop" button — the dv arrow will light up green).
4. Press the S-VHS button (the s-vhs button will light up orange).

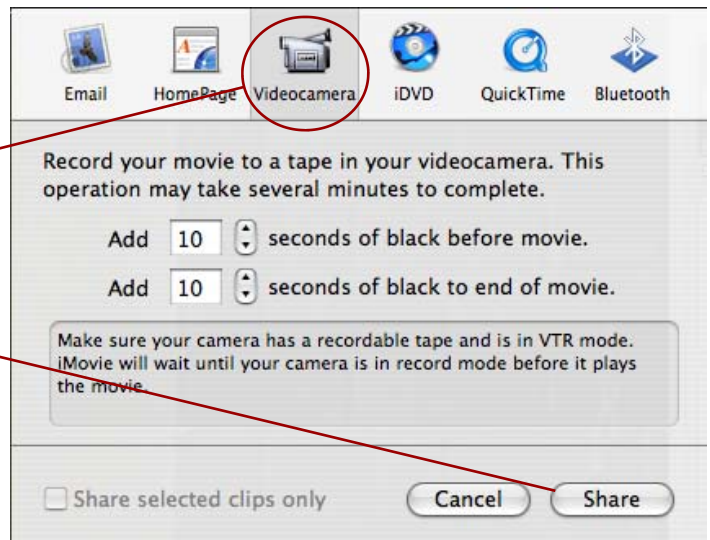
*Con't...*

**2**

Click on File > Share

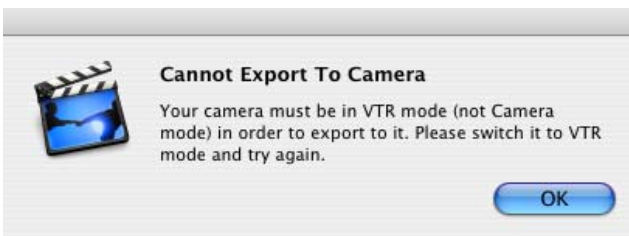
You will get a window with options for exporting your movie. Select "VideoCamera"

The standard settings for the options in this window are as seen at right. You can adjust these if needed. Click Share.



**3**

When you are exporting to **VHS tape**, you often get an error message like the one below stating your camera is not in VTR mode.



If you don't get this message proceed on to step 4. If you do get this message perform the following →

- click "OK" to remove the error message
- click on the dv camera icon just below your preview window, as if you are importing new footage into iMovie
- immediately click again on the scissors icon to return to editing mode
- click File > Share again
- proceed as in steps 1 & 2 above, checking the settings and clicking SHARE.



**4**

You may now get a message like the one at right, this is normal as our decks use a converter box. With your blank tape in the VCR, make sure your deck settings are set correctly on the VCR per step #1 and then click "Continue" to proceed.



You will now see a timeline counting down the seconds for your camera to get ready.

**Press the record button on the VCR.**

*Note: If you continue to get the "camera not in VTR mode" error message shown in step #3, try turning the VCR off and on and proceeding through the steps again. This is unfortunately not an exact science...*

iMovie is now sending your movie out to the VCR.

- It is a real-time process. This means if your movie is 20 minutes long, it will take 20 minutes to burn out.
- Do not do anything on the computer while iMovie exports your video.
- Always check your tape before leaving to make sure the movie exported.